

# Kambri *at* ANU

## Conference and event spaces

**Manning Clark Hall**

**Lowitja O'Donoghue Cultural Centre**

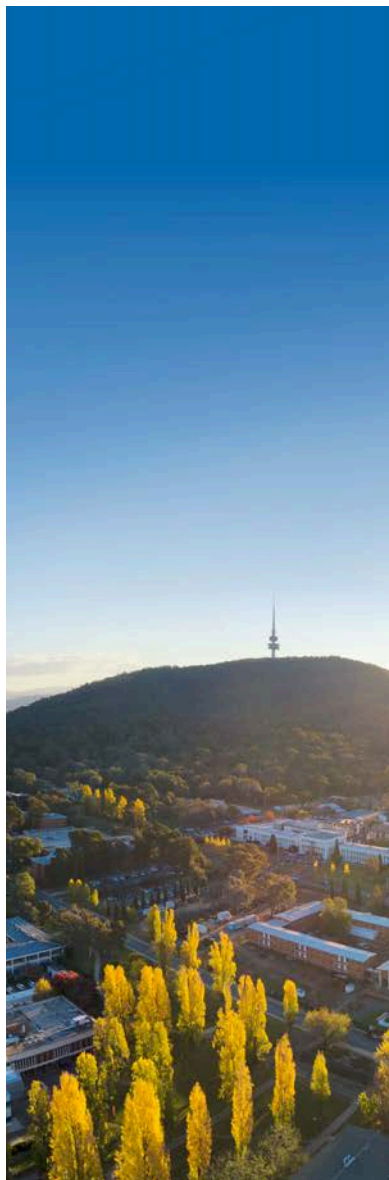


Kambri website  
Virtual tours

# Acknowledgement of Country

For the traditional custodians of this land, 'Kambri' has been a meeting place for thousands of years. The name was gifted to the ANU by representatives of the Little Gudgenby River Tribal Council, Buru Ngunawal Aboriginal Corporation, King Brown Tribal Group, and the Ngarigu Currawong Clan.

The Kambri cultural precinct offers a new educational, physical, creative and social experience in a village setting. In time, this contemporary community space hopes to bring the spirit of placemaking and gathering to the ANU.



# Why Kambri?

There are many reasons as to why Kambri would be the perfect venue to host your next event:

## Proximity to CBD and Parliament

Conveniently located for easy access, making it ideal for corporate events and gatherings.

## Underground parking

Ample parking facilities ensure stress-free arrival for attendees, enhancing overall convenience.

## Flexibility in catering

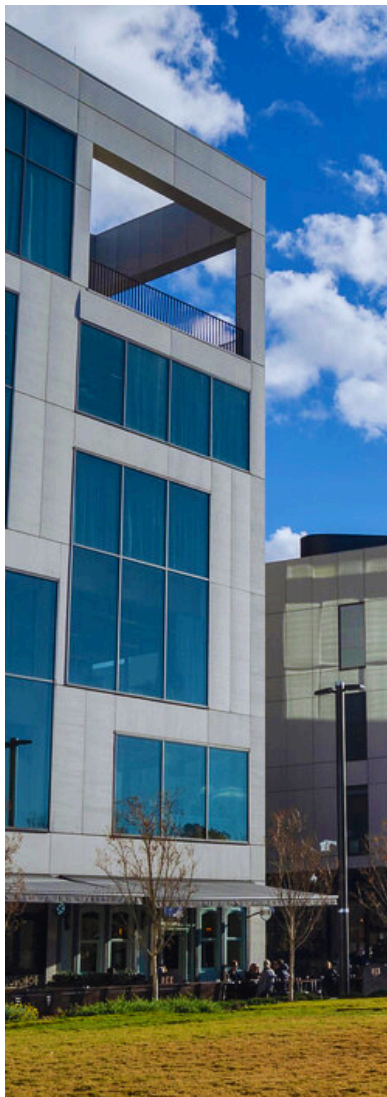
Clients can choose their own catering company with minimal restrictions, allowing for customised dining.

## On-site amenities

Access to restaurants and cafes within the precinct provides convenient dining options for guests.

## Modern facilities

Equipped with state-of-the-art technology and the latest audiovisual tools to support any and every kind of event.





## Lowitja O'Donoghue Cultural Centre

The Lowitja O'Donoghue Cultural Centre is a multi-purpose teaching and events facility incorporating several diverse spaces, as well as kitchen facilities to support the hosting of catered functions. The Centre host multiple venues, including Manning Clark Hall, Small Events Space (T2), Cinema, Drama Theatre, and the Gallery.

The Centre is **ideal for lectures, concerts, corporate and cultural gatherings, and elegant dining events**. With versatile spaces designed for diverse occasions, it fosters engagement and memorable experiences. Enjoy a dynamic environment that accommodates both large-scale and focused events.

### Highlights

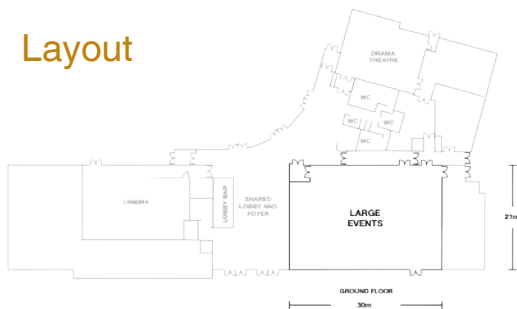
- Two-floor modern building offering a range of room options, including a cinema, theatre, lobby, courtyard, exhibition space, rehearsal kitchen, and green room.
- Room capacities range from 100 to 500, with both cinema-style seating and flat-floor arrangements available.
- Bar service is available.



## Manning Clark Hall

A magnificent major events space within the Lowitja O'Donoghue Cultural Centre, the Manning Clark Hall has retractable tiered seating, staging, and full production capabilities, enabling it to double not only as a theatre for **public lectures** and **major concerts**, but also as a dining hall for **large-scale celebratory events**. It is also the home of the magnificent Sidney Nolan mural, Eureka Stockade, donated to the ANU by the Reserve Bank of Australia.

### Layout



### Highlights

- 12 Sico Stage Blocks (41cm or 61cm tall)
- Suspended lighting and sound production rig
- Backstage green room and change room facilities
- Sidney Nolan's seminal artwork, Eureka Stockade, a striking 20-metre long mural

500  
Seating

700  
Standing

600  
Cocktail

280  
Banquet

## Audiovisual features

- 1x Lapel mic
- 1x Fixed lecture console mic
- Projector and screen
- HDMI connection for laptops

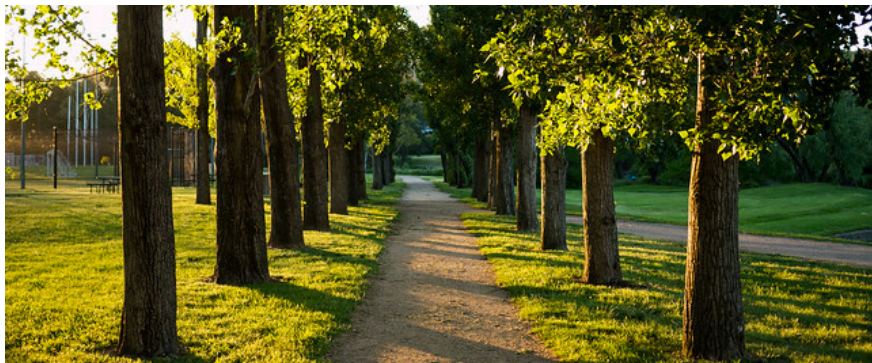
The following equipment are available for hire at extra cost:

- Standard stage and skirting.
- Handheld microphones.
- Wireless lectern.
- Professional audio and lighting production is available upon request. Please contact us to discuss your requirements.

Our venues currently do not support hybrid events. Please engage an external audiovisual company for assistance.







# At Kambri, we value sustainability

## Green design thinking

The entire precinct was designed and delivered using the One Planet methodology, a quantitative measure of human demand versus supply of nature. The precinct is operating at 0.6 of a planet per year. University Campuses are using approximately 1.3 planets per year.

## Carbon reduction

Across the project, over 31,100 tonnes of CO<sup>2</sup> was avoided by specifying low carbon materials, and clever design and construction. 40% less embodied carbon was used for the base building, and 50% less for the fitouts.

## Carbon smart event guide

ANU Green has updated its [Carbon Smart Event Guide](#), which outlines easy steps to run more sustainable events on and off campus. Events are an important part of the university experience, but they also produce a large amount of greenhouse gas (GHG) emissions. The good news is there are easy steps we can take to have a positive impact.

Many of the suggestions not only reduce our environmental impact but also have lower associated costs while emphasising community engagement.

# Contact us

**Kambri *at* ANU**

**p** 02 6215 6479

**e** [kambri.venues@anu.edu.au](mailto:kambri.venues@anu.edu.au)

