

Kambri *at* ANU

Conference and event spaces

Lobby & Northern Courtyard

Lowitja O'Donoghue Cultural Centre

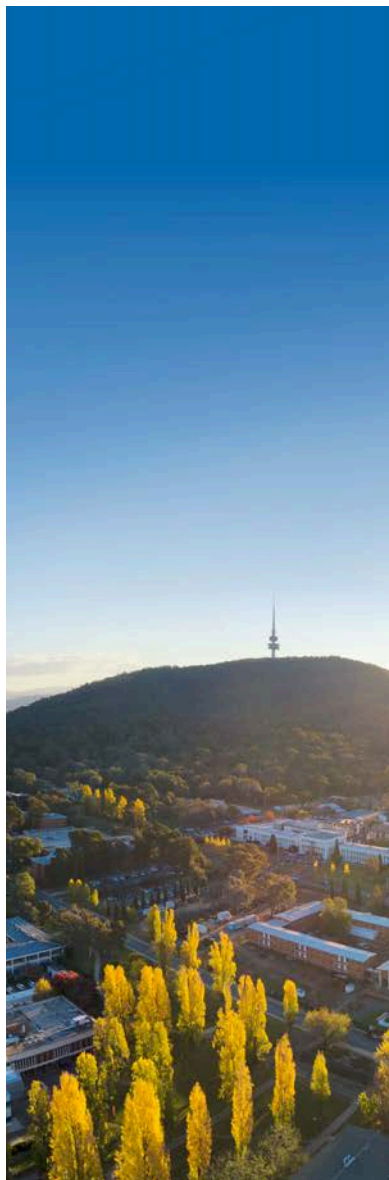


Kambri website
Virtual tours

Acknowledgement of Country

For the traditional custodians of this land, 'Kambri' has been a meeting place for thousands of years. The name was gifted to the ANU by representatives of the Little Gudgenby River Tribal Council, Buru Ngunawal Aboriginal Corporation, King Brown Tribal Group, and the Ngarigu Currawong Clan.

The Kambri cultural precinct offers a new educational, physical, creative and social experience in a village setting. In time, this contemporary community space hopes to bring the spirit of placemaking and gathering to the ANU.



Why Kambri?

There are many reasons as to why Kambri would be the perfect venue to host your next event:

Proximity to CBD and Parliament

Conveniently located for easy access, making it ideal for corporate events and gatherings.

Underground parking

Ample parking facilities ensure stress-free arrival for attendees, enhancing overall convenience.

Flexibility in catering

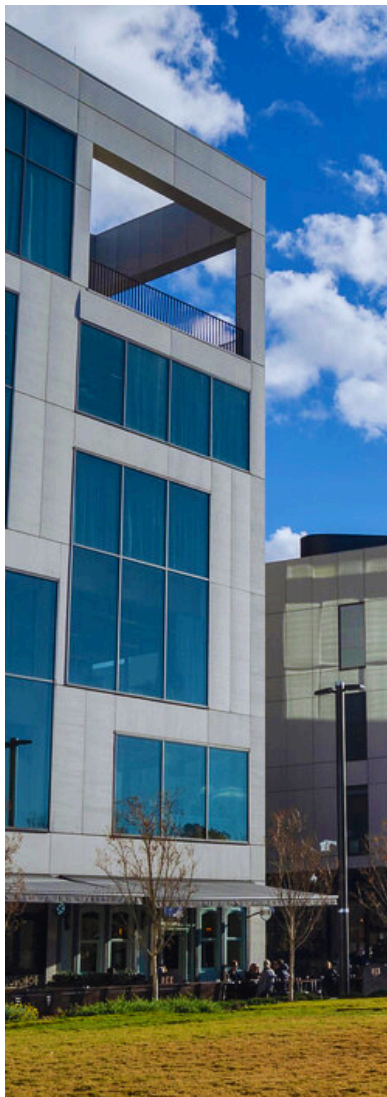
Clients can choose their own catering company with minimal restrictions, allowing for customised dining.

On-site amenities

Access to restaurants and cafes within the precinct provides convenient dining options for guests.

Modern facilities

Equipped with state-of-the-art technology and the latest audiovisual tools to support any and every kind of event.





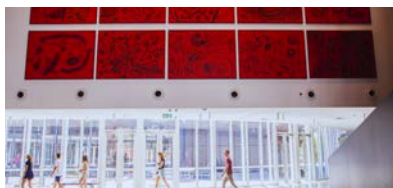
Lowitja O'Donoghue Cultural Centre

The Lowitja O'Donoghue Cultural Centre is a multi-purpose teaching and events facility incorporating several diverse spaces, as well as kitchen facilities to support the hosting of catered functions. The Centre host multiple venues, including Manning Clark Hall, Small Events Space (T2), Cinema, Drama Theatre, and the Gallery.

The Centre is **ideal for lectures, concerts, corporate and cultural gatherings, and elegant dining events**. With versatile spaces designed for diverse occasions, it fosters engagement and memorable experiences. Enjoy a dynamic environment that accommodates both large-scale and focused events.

Highlights

- Two-floor modern building offering a range of room options, including a cinema, theatre, lobby, courtyard, exhibition space, rehearsal kitchen, and green room.
- Room capacities range from 100 to 500, with both cinema-style seating and flat-floor arrangements available.
- Bar service is available.



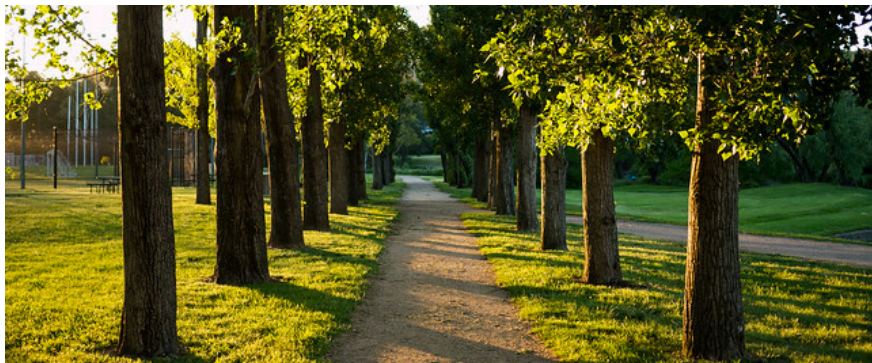
Lobby & Northern Courtyard

The **Lobby** is a spacious, sunlit communal space looking onto the Northern Courtyard. Featuring abundant natural light, polished concrete floors, a custom-built marble-tiled bar, a separate cloakroom, and vibrant artworks that complement the full-height dark panel walls, it can accommodate 300 people for a cocktail function and is the **ideal reception or breakout space** for your next event.

The **Northern Courtyard** is a **tranquil and bright outdoor entertainment area** tucked between the Culture and Events building and the student accommodation, away from the hustle and bustle of University Avenue. It features landscaped garden beds, bench seating and direct access from the lobby bar, and is able to cater for moveable furniture, table tennis activations and as an overflow event space.

Highlights

- Consists of 10 large works that are part of Indigenous artist Naata Nungurrayi's epic 155 piece collection titled *Iconography*
- Backstage green room and change room facilities
- Cocktail modular furniture
- Public address system and power access
- Capacity of 300 people



At Kambri, we value sustainability

Green design thinking

The entire precinct was designed and delivered using the One Planet methodology, a quantitative measure of human demand versus supply of nature. The precinct is operating at 0.6 of a planet per year. University Campuses are using approximately 1.3 planets per year.

Carbon reduction

Across the project, over 31,100 tonnes of CO² was avoided by specifying low carbon materials, and clever design and construction. 40% less embodied carbon was used for the base building, and 50% less for the fitouts.

Carbon smart event guide

ANU Green has updated its [Carbon Smart Event Guide](#), which outlines easy steps to run more sustainable events on and off campus. Events are an important part of the university experience, but they also produce a large amount of greenhouse gas (GHG) emissions. The good news is there are easy steps we can take to have a positive impact.

Many of the suggestions not only reduce our environmental impact but also have lower associated costs while emphasising community engagement.

Contact us

Kambri *at* ANU

p 02 6215 6479

e kambri.venues@anu.edu.au

