

Kambri *at* ANU

Conference and event spaces

Gallery

Lowitja O'Donoghue Cultural Centre

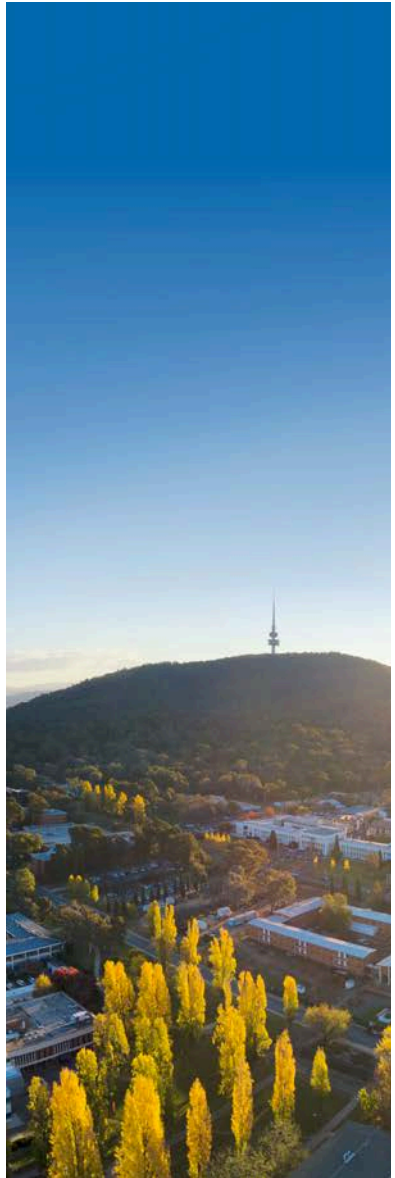


Kambri website
Virtual tours

Acknowledgement of Country

For the traditional custodians of this land, 'Kambri' has been a meeting place for thousands of years. The name was gifted to the ANU by representatives of the Little Gudgenby River Tribal Council, Buru Ngunawal Aboriginal Corporation, King Brown Tribal Group, and the Ngarigu Currawong Clan.

The Kambri cultural precinct offers a new educational, physical, creative and social experience in a village setting. In time, this contemporary community space hopes to bring the spirit of placemaking and gathering to the ANU.



Why Kambri?

There are many reasons as to why Kambri would be the perfect venue to host your next event:

Proximity to CBD and Parliament

Conveniently located for easy access, making it ideal for corporate events and gatherings.

Underground parking

Ample parking facilities ensure stress-free arrival for attendees, enhancing overall convenience.

Flexibility in catering

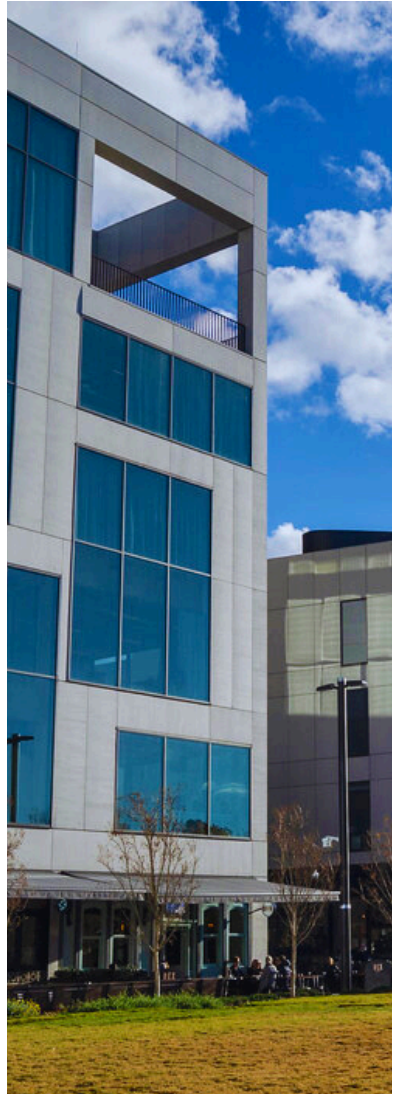
Clients can choose their own catering company with minimal restrictions, allowing for customised dining.

On-site amenities

Access to restaurants and cafes within the precinct provides convenient dining options for guests.

Modern facilities

Equipped with state-of-the-art technology and the latest audiovisual tools to support any and every kind of event.





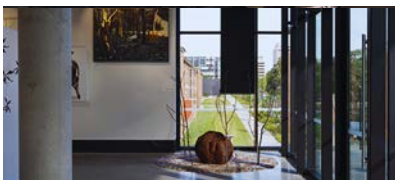
Lowitja O'Donoghue Cultural Centre

The Lowitja O'Donoghue Cultural Centre is a multi-purpose teaching and events facility incorporating several diverse spaces, as well as kitchen facilities to support the hosting of catered functions. The Centre host multiple venues, including Manning Clark Hall, Small Events Space (T2), Cinema, Drama Theatre, and the Gallery.

The Centre is **ideal for lectures, concerts, corporate and cultural gatherings, and elegant dining events**. With versatile spaces designed for diverse occasions, it fosters engagement and memorable experiences. Enjoy a dynamic environment that accommodates both large-scale and focused events.

Highlights

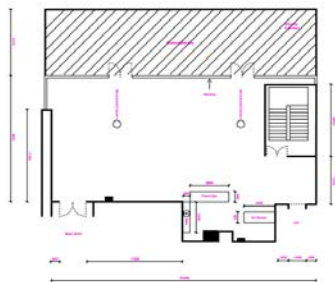
- Two-floor modern building offering a range of room options, including a cinema, theatre, lobby, courtyard, exhibition space, rehearsal kitchen, and green room.
- Room capacities range from 100 to 500, with both cinema-style seating and flat-floor arrangements available.
- Bar service is available.



Gallery

The Gallery is a social enterprise and creative place making business that thrives on operating outside the parameters of a traditional gallery. The Gallery hosts corporate, cultural activities, and commercial impulses and provides a unique offering for cocktail and networking-style events in an active gallery environment. It's a malleable events space, able to host **sit-down dinners, awards nights, presentations, meetings, exhibitions and more.**

Layout



Seating



Standing



Cocktail



Banquet

Highlights

- Comfortable seating and vibrant gathering space
- Often features rotating art exhibitions showcasing works by students, local artists, and cultural groups
- Access to a private balcony
- Access to car park lift

Audiovisual features

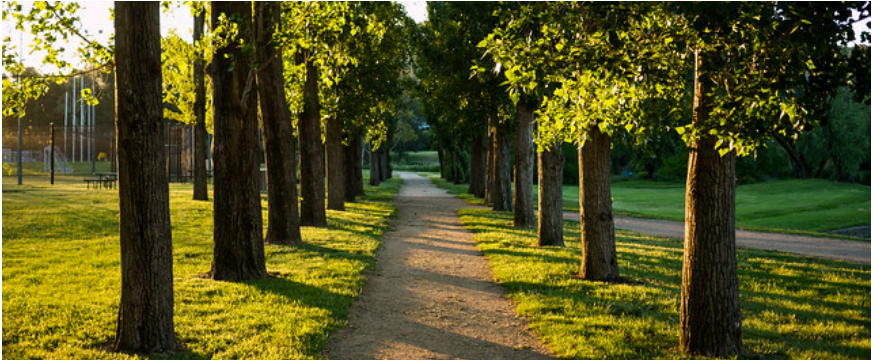
- 1x Wireless lectern with gooseneck mic
- 1x Wireless handheld mic
- Background music playback connection
- 2x PA Speakers
- 1x 80 inch display on a portable trolley with HDMI connection

The following facilities are available for hire at extra cost:

- Additional microphones are available upon request. Please contact us to discuss your requirements.

Our venues currently do not support hybrid events. Please engage an external audiovisual company for assistance.





At Kambri, we value sustainability

Green design thinking

The entire precinct was designed and delivered using the One Planet methodology, a quantitative measure of human demand versus supply of nature. The precinct is operating at 0.6 of a planet per year. University Campuses are using approximately 1.3 planets per year.

Carbon reduction

Across the project, over 31,100 tonnes of CO² was avoided by specifying low carbon materials, and clever design and construction. 40% less embodied carbon was used for the base building, and 50% less for the fitouts.

Carbon smart event guide

ANU Green has updated its [Carbon Smart Event Guide](#), which outlines easy steps to run more sustainable events on and off campus. Events are an important part of the university experience, but they also produce a large amount of greenhouse gas (GHG) emissions. The good news is there are easy steps we can take to have a positive impact.

Many of the suggestions not only reduce our environmental impact but also have lower associated costs while emphasising community engagement.

Contact us

Kambri at ANU

p 02 6215 6479

e kambri.venues@anu.edu.au

