



Conference & Event Spaces Kambri at ANU

Superfloor

Venue Overview

Kambri at ANU

The Kambri Precinct at The Australian National University (ANU) offers a collection of world-class spaces with capabilities of hosting a versatile range of events.

The spaces offer a unique experience to suit your every need, whether it be a private, public or corporate event, concerts, banquets, conferences, annual general meetings, workshops, presentations or product launches.

Wiltshire + Dimas are the Precinct Managers of Kambri at ANU. With W&D's placemaking expertise, Kambri at ANU is becoming not just the heart of a thriving campus, but also the heart of the City it embodies.

Superfloor

The Superfloor is a multi purpose space featuring contemporary design, natural light and in built presentation facilities . Located on the top floor of the Marie Reay Teaching Centre, the Superfloor is the perfect place to host your next event.



Venue Info

Location

Level 6, Marie Reay Teaching Centre, University Ave, Kambri ANU

[Google Maps](#)

Size

Area: 337.5m² (whole floor: 900m²)
 Ceiling Height: (See Truss Section)

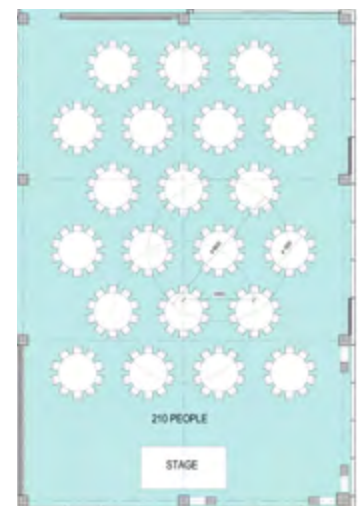
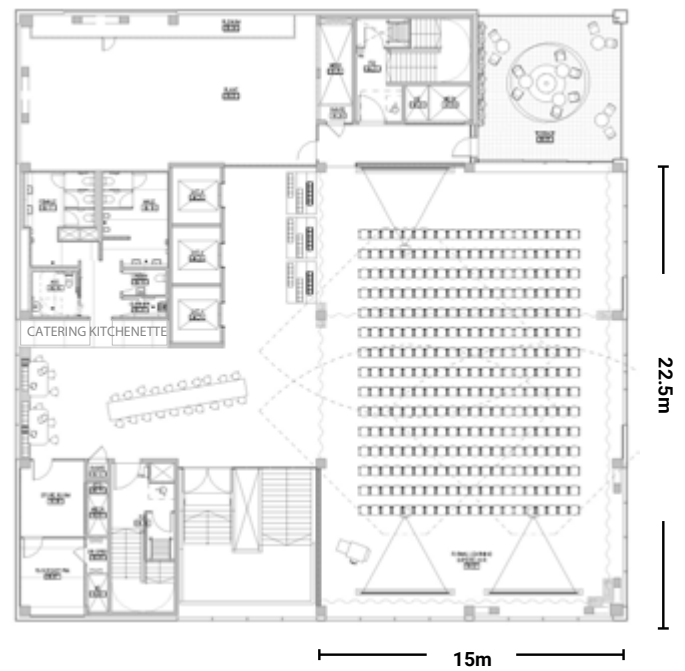
Capacity

Workshop: 140
 Theatre: 300
 Cocktail: 500
 Banquet: 180

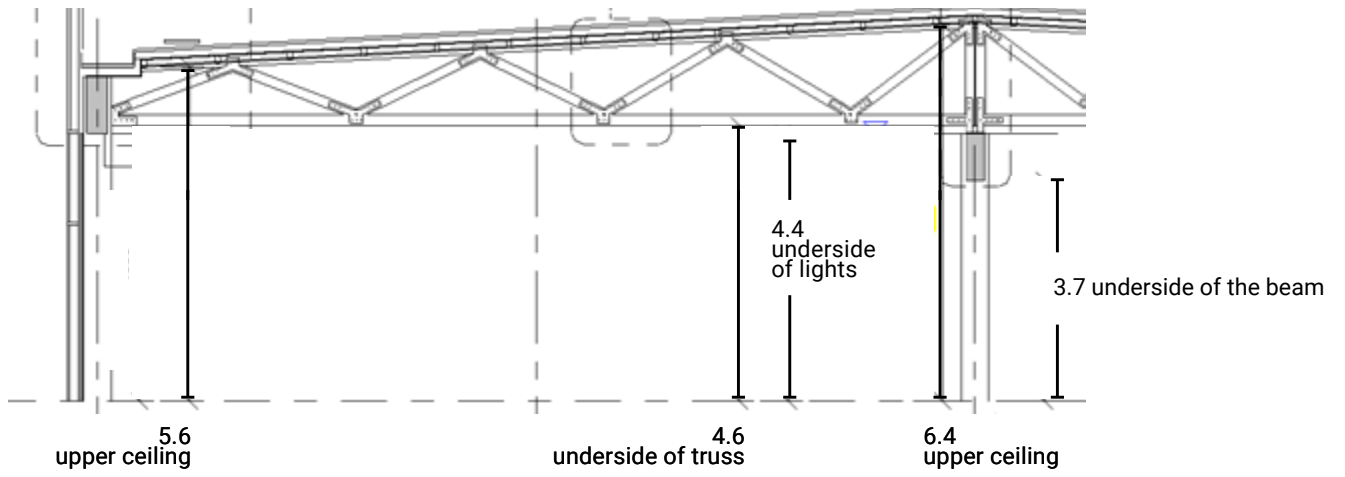
Parking

Access to the single level, underground car park is available at discounted rates for events packages. The car park includes 392 spaces, elevator access directly into the Marie Reay Teaching Centre and two pedestrian access points.

3 hours FREE parking on weekends. More



Alternate Banquet Arrangement



Superfloor

Facilities & Services

The Venue is equipped with the following facilities and services that are included in the Venue Hire Fee:

- Movable furniture with customisable seating arrangements
- Additional break-away rooms
- Lift access from ground level
- Bathroom facilities (shown on floor plan)

Audio Visual Features

The Venue is equipped with the following audio visual features that are included in the Venue Hire Fee:

- 1 x PC w/ NEC 22" display monitor
- 1 x Crestron TSW-760-B-S touch panel
- 1 x Crestron Airmedia Wireless Presenter
- 1 x Lecture Capture (Echo360)
- 4 x Shure ULXD1 Beltpack transmitter wireless w/ lapel microphones (2 spares)
- 2 x Shure ULXD4 Wireless Receiver
- 1 x Shure MX412 Gooseneck microphone
- 3 x NEC Projector (5400 lumens)
- 3 x motorised projector screen
- 24 distributed loudspeakers
- 1 x Williams Sound WIR TX75c
- Crestron NVX AVoverIP platform
- Crestron CP3 control processor (central allocation)
- QSC Q-Sys DSP (central allocation)
- Lab Gruppen E series amplifiers (central allocation)

Catering/Staffing

At the Kambri Precinct, event organisers can choose a caterer from our preferred list, who will provide flexible catering options to suit your requirements, budget and taste preferences.

For any staffing requirements, please ask your Wiltshire + Dimas event organiser to receive a quote.

Contact Details

Kambri Concierge
Wiltshire + Dimas Management Kambri at ANU

p 02 6230 4518
e concierge.kambri@wdmanagement.com.au

