



Conference & Event Spaces Kambri at ANU

T2

Venue Overview

Kambri at ANU

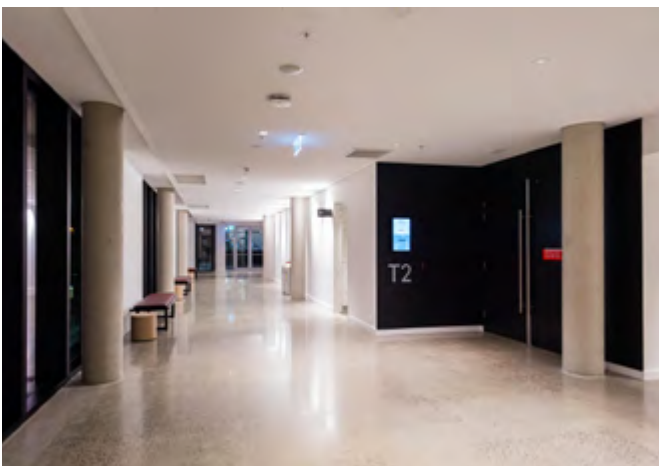
The Kambri Precinct at The Australian National University (ANU) offers a collection of world-class spaces with capabilities of hosting a versatile range of events.

The spaces offer a unique experience to suit your every need, whether it be a private, public or corporate event, concerts, banquets, conferences, annual general meetings, workshops, presentations or product launches.

Wiltshire + Dimas are the Precinct Managers of Kambri at ANU. With W&D's placemaking expertise, Kambri at ANU is becoming not just the heart of a thriving campus, but also the heart of the City it embodies.

T2

Located on Level 2 of the Cultural Centre, T2 is a multi-use and multi-capacity space featuring retractable seating systems, staging and full production capabilities. Within the Kambri Precinct, in the epicentre of the ANU; it is the perfect location for your next event.



Venue Info

Location

Level 1, Cultural Centre, University Ave,
Kambri ANU

[Google Maps](#)

Size

Area: 293.3m²

Ceiling Height: 5.8m

Capacity

Stadium Seating: 200

Stadium Standing: 425

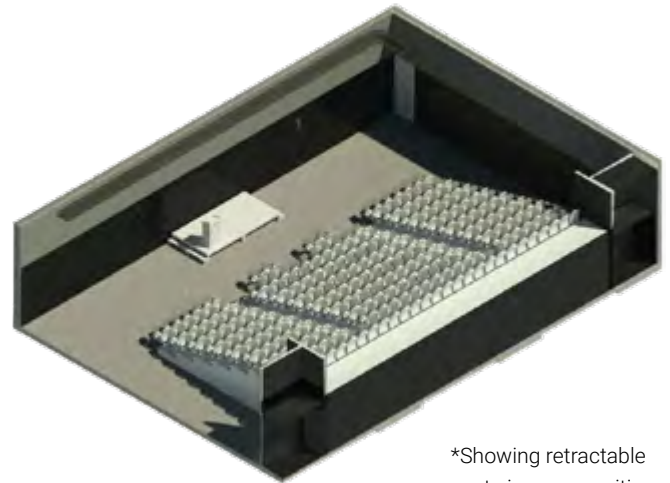
Cocktail: 258

Banquet: 160

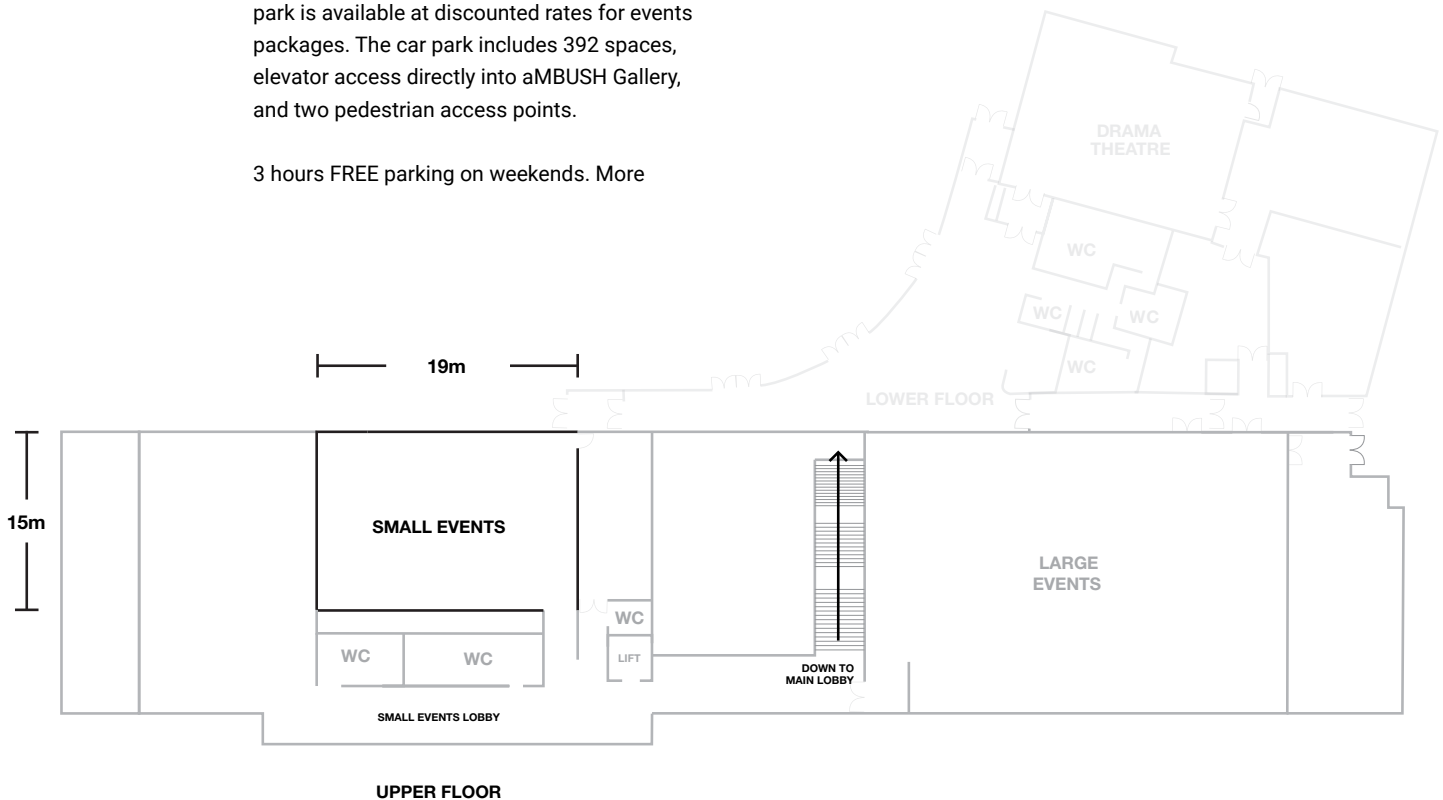
Parking

Access to the single level, underground car park is available at discounted rates for events packages. The car park includes 392 spaces, elevator access directly into aMBUSH Gallery, and two pedestrian access points.

3 hours FREE parking on weekends. More



*Showing retractable seats in open position



T2

Facilities & Services

The Venue is equipped with the following facilities and services that are included in the Venue Hire Fee:

- Front stage (interchangeable height)
- Separate servery
- Lobby bar in the building
- Bathroom facilities (shown on floor plan)

Audio Visual Features

The Venue is equipped with the following audio visual equipment that are included in the Venue Hire Fee:

- Full lighting and sound production capabilities
- ETC STAGE CL lighting control console
- Selection of 22 lighting fixtures (8 x Fresnel, 8 x PARNet, 6 x Profile Spot – all ETC range)
- Set of black drapes in 500GSM wool drape, 50% fullness (8700 x 20140mm, 2000 x 18290mm, 8700 x 6450mm, 8700x3000mm)
- Portable staging units – SICO 1800 series 60x80 (600mm – 800mm height adjustable)
- Dual projection on 180" displays
- Tannoy stereo loudspeakers
- Show relay audio (microphone – Sennheiser MKH-8060)
- Pipe grid for suspension of lighting fixtures, drapes or other items when required on a hire-in basis)
- Basic DMX infrastructure to support lighting control

Catering/Event Staff

Black & White Waiters are the exclusive caterers in the Kambri Cultural Centre and provide flexible quality cuisine and service from high end to budget appropriate packages.

Upon confirmation of event booking, Black & White will work with the client to curate a menu for the event.

Contact Details

Kambri Concierge
Wiltshire + Dimas Management Kambri at ANU

p 02 6230 4518
e concierge.kambri@wdmanagement.com.au

