



Conference & Event Spaces Kambri at ANU

T2

Kambri *at* ANU

Kambri at ANU

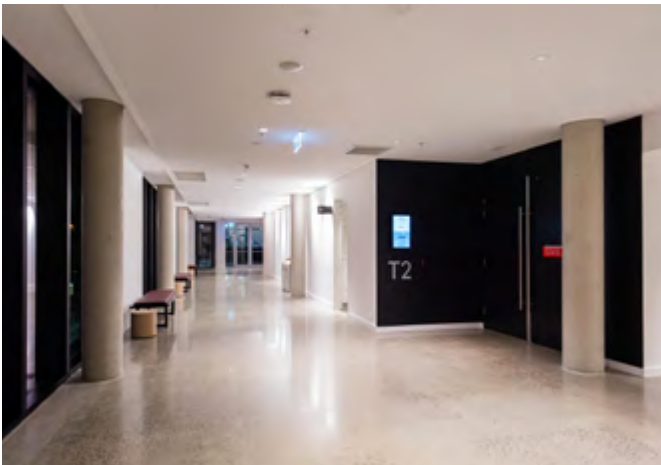
The Kambri Precinct at The Australian National University (ANU) offers a collection of world-class spaces with capabilities of hosting a versatile range of events.

The spaces offer a unique experience to suit your every need, whether it be a private, public or corporate event, concerts, banquets, conferences, annual general meetings, workshops, presentations or product launches.

Kambri at ANU is becoming not just the heart of a thriving campus, but also the heart of the City it embodies.

T2

Located on Level 2 of the Cultural Centre, T2 is a multi-use and multi-capacity space featuring retractable seating systems, staging and full production capabilities. Within the Kambri Precinct, in the epicentre of the ANU; it is the perfect location for your next event.



Venue Info

Location

Level 1, Cultural Centre, University Ave, Kambri ANU

[Google Maps](#)

Size

Area: 293.3m²
Ceiling Height: 5.8m

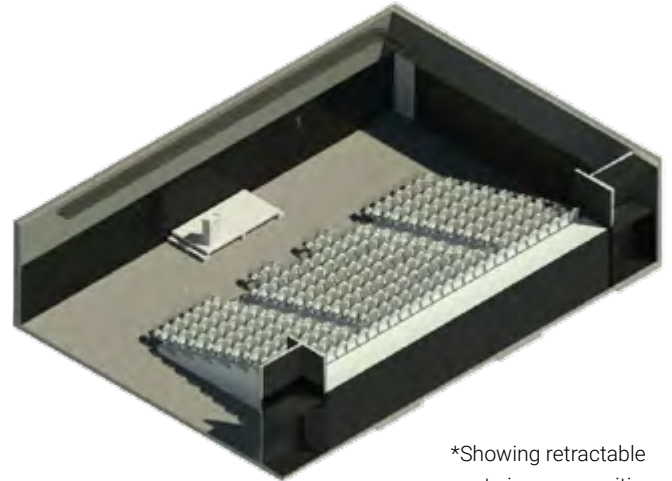
Capacity

Stadium Seating: 200
Stadium Standing: 250
Cocktail: 250
Banquet: 120

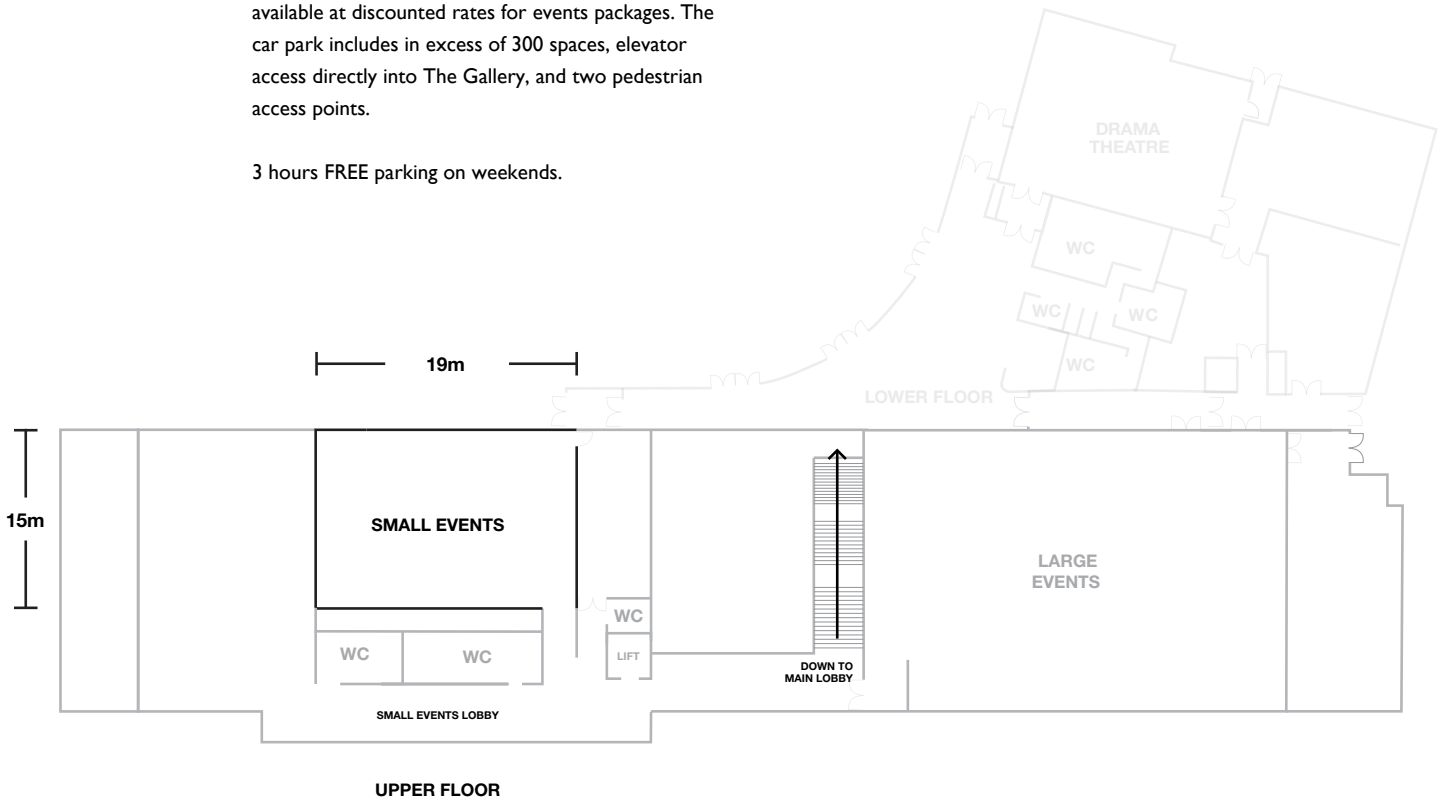
Parking

Access to the single level, underground car park is available at discounted rates for events packages. The car park includes in excess of 300 spaces, elevator access directly into The Gallery, and two pedestrian access points.

3 hours FREE parking on weekends.



*Showing retractable seats in open position



T2

Facilities & Services

The Venue is equipped with the following facilities and services

- Lobby bar in the building
- Bathroom facilities (shown on floor plan)

Audio Visual Features

The venue is compatible with the following audio visual equipment that can be hired for your event:

- Full lighting and sound production capabilities can be arranged
- Portable staging units – SICO 1800 series 60x80 (600mm – 800mm height adjustable)
- Dual projection on 180" displays
- Tannoy stereo loudspeakers
- Show relay audio (microphone – Sennheiser MKH-8060)
- Pipe grid for suspension of lighting fixtures, drapes or other items when required on a hire-in basis)

**please note that staffing and accessories are costed seperatley*

Contact Details

Kambri at ANU

p 02 6215 6479

e kambri.venues@anu.edu.au

