



# Conference & Event Spaces Kambri at ANU

---

Marie Reay Teaching Centre

## Venue Overview

# Kambri at ANU

---

The Kambri Precinct at The Australian National University (ANU) offers a collection of world-class spaces with capabilities of hosting a versatile range of events.

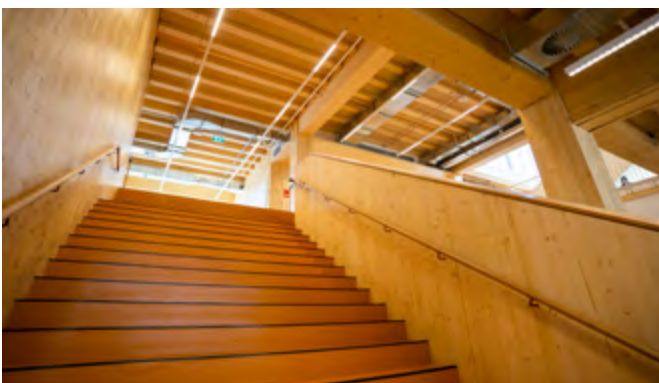
The spaces offer a unique experience to suit your every need, whether it be a private, public or corporate event, concerts, banquets, conferences, annual general meetings, workshops, presentations or product launches.

Wiltshire + Dimas are the Precinct Managers of Kambri at ANU. With W&D's placemaking expertise, Kambri at ANU is becoming not just the heart of a thriving campus, but also the heart of the City it embodies.

# Marie Reay Teaching Centre

---

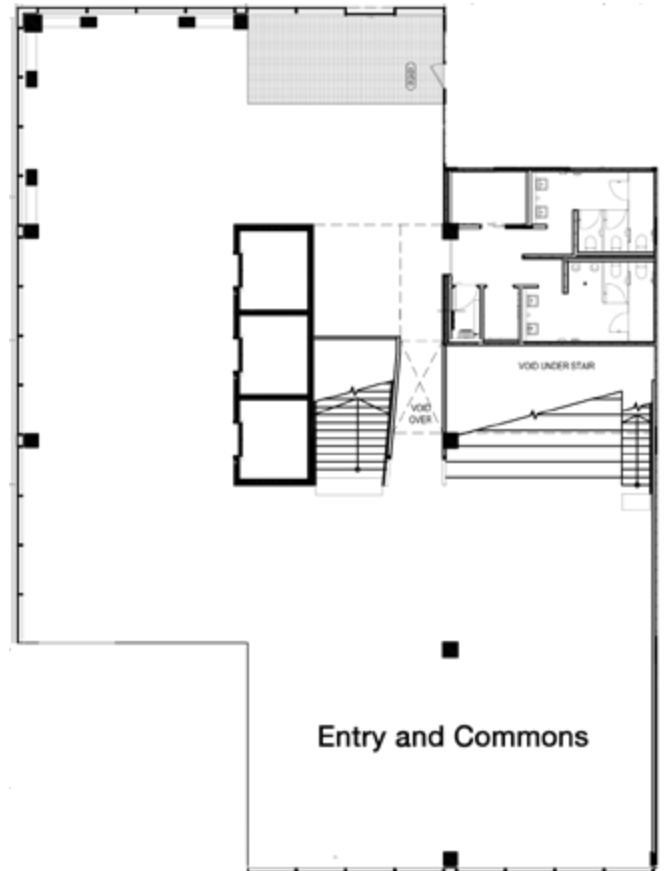
The Marie Reay Teaching Centre in the Kambri Precinct is the perfect space to host breakout sessions, focus groups, informal socials, boardroom meetings and workshops. The flexible spaces come fully equipped with A/V and sound. Over six floors, the rooms can be configured to suit your group's needs.



# Level 1

---

Entry and Common Area



# Level 2

---

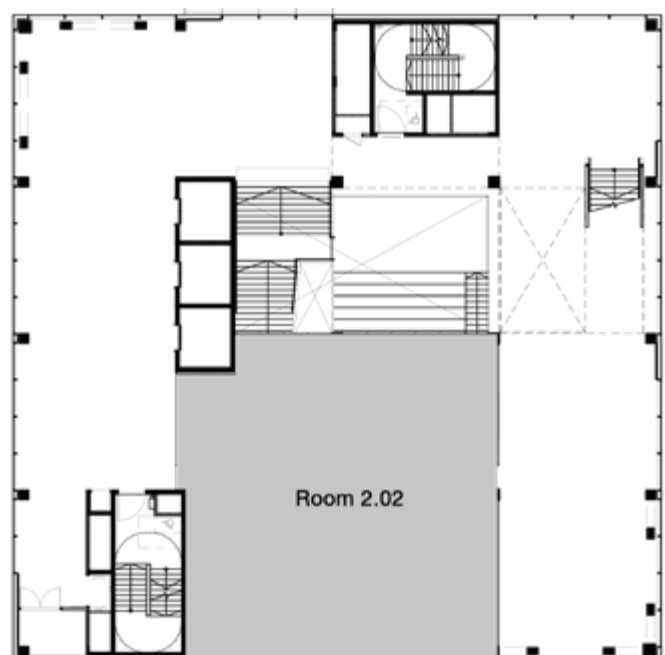
**Room 2.02**

**Capacity**

Workshop - 120

Theatre - 200

Standing - 80



# Level 3

---

## Room 3.02

### Capacity

Workshop – 60

Theatre - 100

## Room 3.03

### Capacity

Workshop – 30

Theatre - 50

## Room 3.04

### Capacity

Workshop – 30

Theatre - 50

## Room 3.05

### Capacity

Workshop – 30

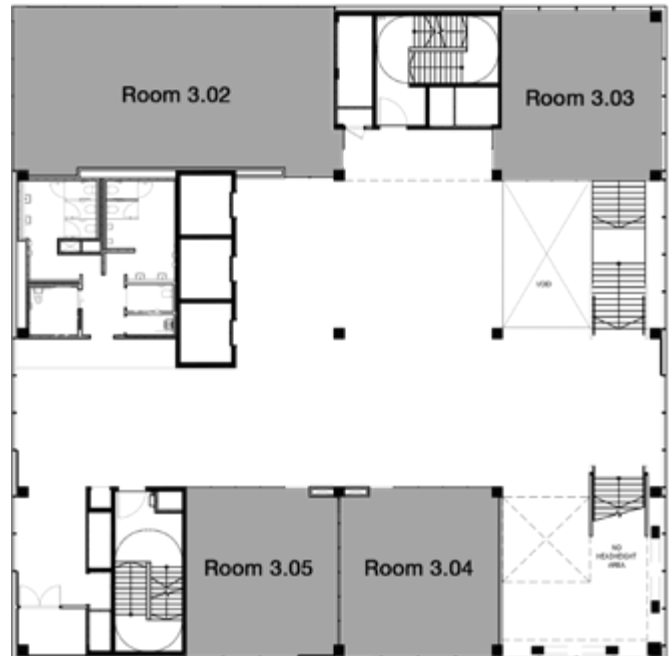
Theatre - 50

## Rooms 3.04 and 3.05

### Capacity

Workshop – 60

Theatre - 100





# Level 4

---

## Room 4.02

### Capacity

Workshop – 60

Theatre - 100

## Room 4.03

### Capacity

Workshop – 30

Theatre - 50

## Room 4.04

### Capacity

Workshop – 30

Theatre - 50

## Room 4.05

### Capacity

Workshop – 30

Theatre - 50

## Room 4.04 and 4.05

### Capacity

Workshop – 60

Theatre - 100



# Level 5

---

## Room 5.02

### Capacity

Workshop – 60

Theatre - 100

## Room 5.03

### Capacity

Workshop – 30

Theatre - 50

## Room 5.04

### Capacity

Workshop – 30

Theatre - 50

## Room 5.03 and 5.04

### Capacity

Workshop – 60

Theatre - 100

## Room 5.05

### Capacity

Workshop – 30

Theatre - 50

## Room 5.06

### Capacity

Workshop – 30

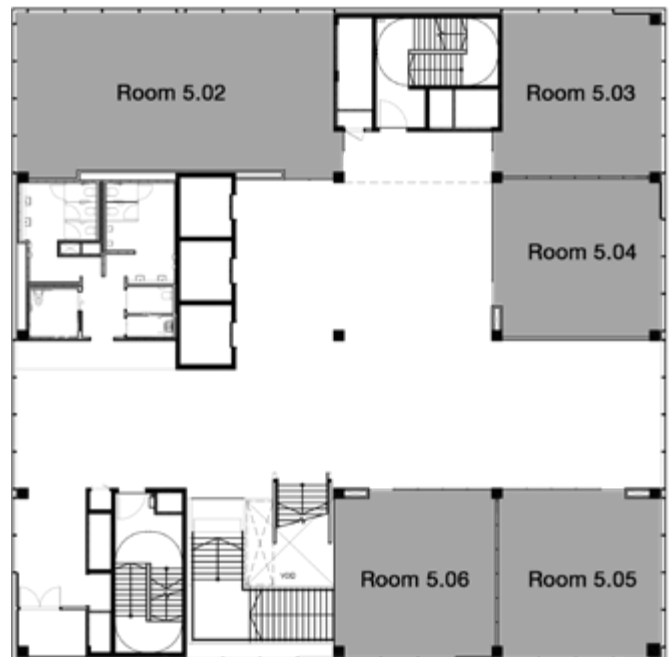
Theatre - 50

## Room 5.05 and 5.06

### Capacity

Workshop – 60

Theatre - 100







# Venue Info

---

## **Location**

Marie Reay Teaching Centre, Building #155,  
University Ave, Kambri ANU

[Google Maps](#)

## **Parking**

Access to the single level, underground car park is available at discounted rates for events packages. The car park includes 392 spaces, elevator access directly into aMBUSH Gallery, and two pedestrian access points.

3 hours FREE parking on weekends. More information on the Care Park [Website](#).

## **Catering/Event Staff**

Black & White Waiters are the preferred caterers for this venue and provide flexible quality cuisine and service from high end to budget appropriate packages.

Upon confirmation of event booking, Black & White can work with the client to curate a menu for the event.



# Marie Reay Teaching Centre

---

## Facilities & Services

All rooms in the Marie Reay Teaching Centre are equipped with the following facilities and services that are included in the Venue Hire Fee:

- Movable furniture with customisable seating arrangements
- Bathroom Facilities
- Additional break-away rooms
- Lift access from ground level

## Audio Visual Features

All rooms in the Marie Reay Teaching Centre are equipped with the following audio visual features:

- PC w/ NEC 22" display monitor
- Crestron TSW-760-B-S touch panel
- Crestron Airmedia Wireless Presenter
- Lecture Capture (Echo360)
- Shure ULXD1 Beltpack transmitter wireless w/ lapel microphones (1 spare)
- Shure ULXD4 Wireless Receiver
- NEC Projector (5400 lumens)
- Motorised projector screen
- Distributed loudspeakers
- 1 x Williams Sound WIR TX75c
- Crestron NVX AVoverIP platform
- Crestron CP3 control processor (central allocation)
- QSC Q-Sys DSP (central allocation)
- Lab Gruppen E series amplifiers (central allocation)

The Crestron touch panel system is utilized via:

1. In-house Dell PC (ANU Logon)
2. Standard HDMI interface (Laptop etc)
3. In House wireless interface

# Contact Details

---

**Kambri Concierge**  
**Wiltshire + Dimas Management Kambri at ANU**

p 02 6230 4518  
e [concierge.kambri@wdmanagement.com.au](mailto:concierge.kambri@wdmanagement.com.au)

