



Conference & Event Spaces Kambri at ANU

Drama Theatre

Venue Overview

Kambri at ANU

The Kambri Precinct at The Australian National University (ANU) offers a collection of world-class spaces with capabilities of hosting a versatile range of events.

The spaces offer a unique experience to suit your every need, whether it be a private, public or corporate event, concerts, banquets, conferences, annual general meetings, workshops, presentations or product launches.

Wiltshire + Dimas are the Precinct Managers of Kambri at ANU. With W&D's placemaking expertise, Kambri at ANU is becoming not just the heart of a thriving campus, but also the heart of the City it embodies.

Drama Theatre

The Drama Theatre is perfect for theatre events, small concerts, presentations and lectures. Located in the Cultural Centre within the Kambri Precinct, situated in the epicenter of ANU; it is the perfect location for your next event.



Venue Info

Location

Level 1, Cultural Centre, University Ave,
Kambri ANU

[Google Maps](#)

Size

Area: 195m²
Ceiling Height: 5.2m

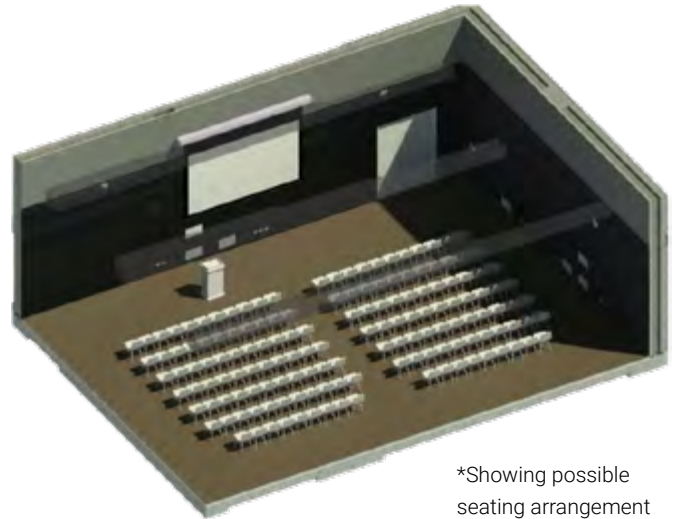
Capacity

Seating: 150 (not fixed seating)
Cocktail: 180
Banquet: 100
Cabaret: 70

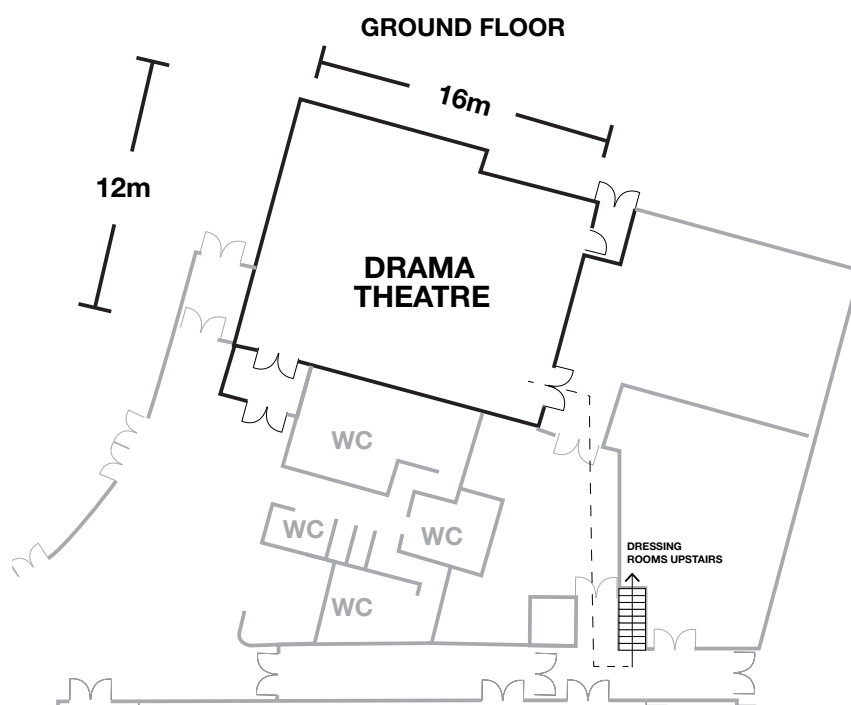
Parking

Access to the single level, underground car park is available at discounted rates for events packages. The car park includes 392 spaces, elevator access directly into aMBUSH Gallery, and two pedestrian access points.

3 hours FREE parking on weekends. More information on the [Care Park Website](#).



*Showing possible seating arrangement



Drama Theatre

Facilities & Services

The Venue is equipped with the following facilities and services that are included in the Venue Hire Fee:

- Lobby bar in the building
- Bathroom facilities (shown on floor plan)

Audio Visual Features

The Venue is equipped with the following audio visual features that are included in the Venue Hire Fee:

- NEC 6500 lumens projector
- 180" projection screen
- Tannoy stereo loudspeakers with Labgruppen amplifier
- Dedicated QSC Q-Sys 110f DSP plus I/O8 Flex
- Event communications master station and 4 headset/beltpacks
- 13 audio patching locations for event support
- Pipe grid for suspension of lighting fixtures and other items
- 72 channel potential capacity for lighting patching via JANDS HUB - Patch 72
- Jands Stage CL lighting control console
- Selection of ETC luminaires (6x Profile Spot, 8 x Fresnel, 14 x PAR)
- DMX control infrastructure including 1 x Pathport Octo 6403, 1 x Pathport Octo 6407 and 1 x Jands HUBXCD 24 channel dimmer unit with wall patch system
- Portable staging units- SICO 1800series 2400x1800 (300-600mm height adjustable)

Catering/Event Staff

Black & White Waiters are the exclusive caterers in the Kambri Cultural Centre and provide flexible quality cuisine and service from high end to budget appropriate packages.

Upon confirmation of event booking, Black & White will work with the client to curate a menu for the event.

Contact Details

Kambri Concierge
Wiltshire + Dimas Management Kambri at ANU

p 02 6230 4518
e concierge.kambri@wdmanagement.com.au

