



Conference & Event Spaces Kambri at ANU

Superfloor

Venue Overview

Kambri at ANU

The precinct at The Australian National University (ANU) offers a unique collection of world-class spaces with capabilities of hosting a versatile range of events.

We offer a unique experience to suit your every need, whether it be a private, public or corporate event, concerts, banquets, conferences, annual general meetings, workshops, presentations or product launches.

Wiltshire + Dimas are the Precinct Managers of Kambri at ANU. With significant expertise in placemaking, they will endeavour that Kambri at ANU becomes not just the heart of the campus, but of Canberra also.

Superfloor

Located on the top floor of the Marie Reay Teaching Centre is the designated Superfloor with a spacious collaborative environment that offers flexibility and enables customisation for all kinds of events.



Venue Info

Location

Top Level, Marie Reay Teaching Centre,
University Ave, Kambri ANU

Size

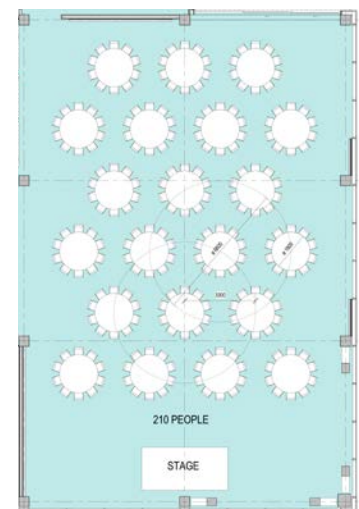
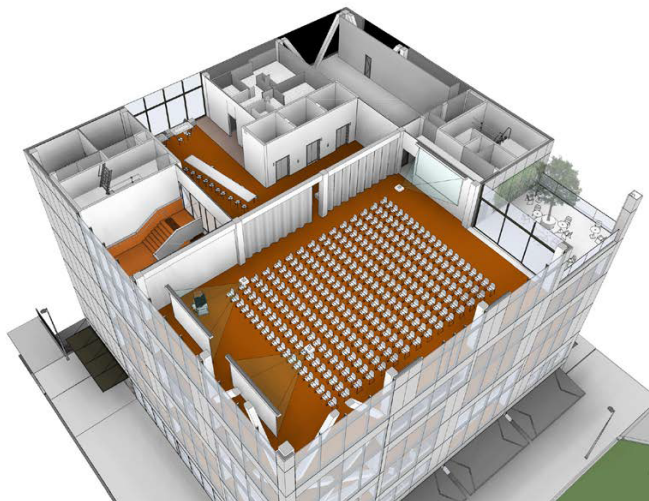
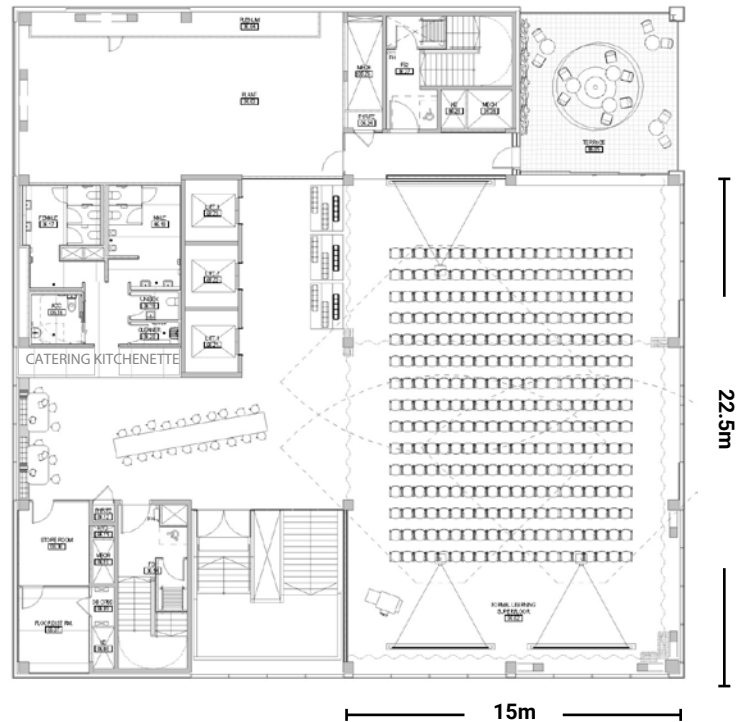
Area: 337.5m² (whole floor: 900m²)
Ceiling Height: Varied (See truss section)

Capacity

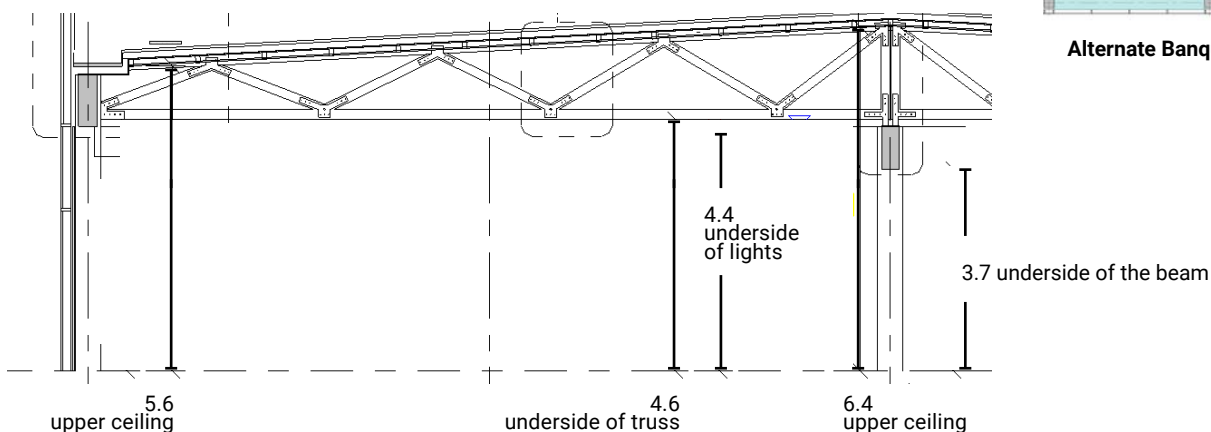
Seating: 300
Cocktail: 500
Banquet: 210

Parking

Access to the single level, underground car park is available at discounted rates for events packages. The car park includes 392 spaces, elevator access to the Cultural Centre and two pedestrian access points.



Alternate Banquet Arrangement



Superfloor



Facilities & Services

The Venue is equipped with the following facilities and services that are included in the Venue Hire Fee:

- Movable furniture with customisable seating arrangements
- Additional break-away rooms
- Lift access from ground level
- Bathroom facilities (shown on floor plan)

Audio Visual Features

The Venue is equipped with the following audio visual features that are included in the Venue Hire Fee:

- Dual large format projection screens and 3rd projection screen location for collaboration use
- 24 distributed loudspeakers
- Triple wireless presenters
- 1 x NEC Projector (5400 lumens)
- 1 x 100" 16:9 motorised screen
- 4 x Tannoy DVS6 loudspeakers
- 1 x Williams Sound WIR TX75c
- 1 x NEC 22" display at teaching point / lectern
- 1 x Crestron TSW-760-B-S touch panel at lectern
- 1 x Crestron Air Media Wireless Presenter
- Crestron NVX AVoverIP platform
- Crestron CP3 control processor (central allocation)
- 1 x ANU PC (by ANU)
- 1 x Lecture Capture
- 1 x Shure MX412 Gooseneck microphone
- 1 x Sennheiser wireless lapel microphone
- QSC Q-Sys DSP (central allocation)
- Lab Gruppen E series amplifiers (central allocation)

Catering/Event Staff

Black & White Waiters are the preferred caterers for this venue and provide flexible quality cuisine and service from high end to budget appropriate packages.

Upon confirmation of event booking, Black & White can work with the client to curate a menu for the event.

Contact Details

Matthew Sykes
Wiltshire + Dimas Management
Events & Relationship Manager
Kambri at ANU

m +61 413 877 044
matthew.sykes@wdmanagement.com.au

